



# COMPANY PORTFOLIO

---

ZMOP





# PORTFOLIO WORK



# — TABLE OF CONTENTS

|                                  |       |
|----------------------------------|-------|
| ABOUT US                         | 4     |
| CEO STATEMENT                    | 5     |
| PRODUCTION CAPACITY & EMPLOYMENT | 6     |
| OUR TEAM                         | 7     |
| WORKSHOP EQUIPMENT               | 8     |
| COMPLEXITY OF OFFERED SERVICES   | 9     |
| HEALTH & SAFETY STATEMENTS       | 10    |
| ENVIRONMENTAL POLICY             | 11    |
| DECLARATION                      | 15    |
| CERTIFICATE                      | 16    |
| PORTFOLIO                        | 17–20 |
| CONTACT                          | 21    |



# About Us

ZMOP company was founded in 1990 with two welding machines and life long experience in welding and construction. We tried to be different from the competition. Over time, our team grew.

In 2019, my son František Jr. and Ivona joined the business, bringing the financial and business experience.

ZMOP has quickly built a reputation thanks to the successful delivery of high-quality goods and services ranging from implementation to design in a very short time.

After a few years, we had strong relationships with our clients and their professional teams. Our goal is to make their dreams come true. Our experience serves clients throughout the European Union and our goods reach clients all over the world.

As the main supplier, we have experience with the reconstruction and expansion of existing buildings, new buildings, static analysis, and design. We also have experience in client service for clients with non-stop production, where the goal is to minimize outages.

Our portfolio is rich in long-term partnerships with clients. Customer satisfaction is the biggest success in ZMOP.





## CEO Statement

Every construction that we have carried out in the past and all our future constructions will always be realized by mutual and professional cooperation.

I am proud of all the joint works, and I believe that we have far exceeded the expectations of investors, but we have not yet reached our limit. With every experience and our constant effort, we increase the quality of our services, which is also confirmed by our customers, who like to turn to us repeatedly.

We have introduced a quality manual in welding and managed processes from the input of material to us to processing to the handover of the building for use by customers. Even though construction work, assembly work, and maintenance are dangerous, and the risk falls on us around every corner, I am glad that we all meet without an accident and have continued without an accident for more than 15 years.

I believe that the basis we have built is strong enough for further growth and new challenges.

Yours sincerely,  
Peter Koči

# Production Capacity & Employment

## Workshop in Modra:

Consists of three production halls with a total covered surface of 2000 square meters. The workshop employs 68 employees with a total capacity of 150 tons per month for mid-size structures.

## Workshop in Rohožník:

Consists of two production halls with a total covered surface of 900 square meters. The workshop employs 50 employees with a production capacity of 80 tons per month for mid-size structures.

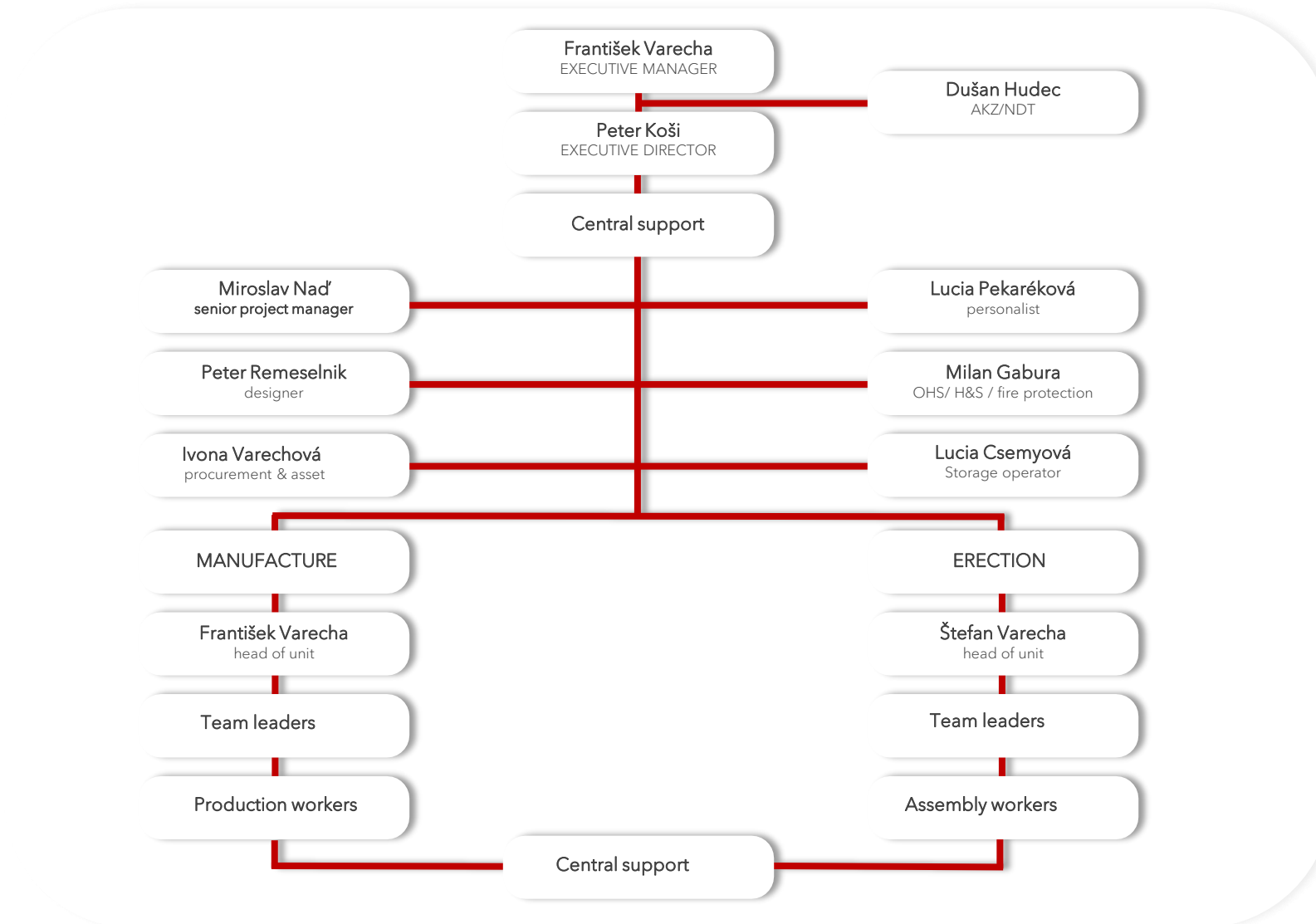
Employment





# Our Team

- From one man with a welding machine to a successful company



# Workshop Equipment

Manipulation with raw material delivered for future manufacture is secured by 3 tower cranes in the entrance warehouse.

Manipulation inside workshops is organized by 2 bridge cranes, where the ability to manipulate the weight of the product is up to 16 tons.

Sheet metal is shaped with CNC plasma and oxyacetylene cutting machine with True Hole technology true to 100 mm thickness.

Drilling holes into beams is organized with a CNC drilling machine with a maximum length of the beam up to 18 meters.

The welding process requires covering welds with WPQR and WPS.

The welding process requires covering welds with WPQR and WPS.

Welding machines MIG / MAG in the total amount of 20 pieces in the workshop; welding machines for arc electrodes in the amount of 30 pieces and 2 submerged arc welding machines.

In case of need to additionally bend or steel, we are equipped with CNC bending machines and a press brake.

Goods leave the workshop and are transported to the shipping warehouse after desired corrosion protection is done. To fasten the drying of paint, we are capable to preheat the painting box with diesel burner to temperatures +50°C.





# ZMOP



## Complexity of Offered Services

ZMOP is a certified company according to the European norm. EN 1090-1:2012 and EN 1090-2:2018 up to EXC 3.

All welding processes are controlled by the Welding Engineer to fulfil the established welding quality system according to DIN EN ISO 3834-2. Manufactured goods are sandblasted (blasting from Sa2 up to Sa3 in a sandblasting box with dimensions width of 5 000 mm; height of 4 000 mm and length of 14 000 mm).

They are painted in a painting box with similar dimensions straight afterward, where we can apply corrosion protection up to C5I.

Our quality is not limited to European Norms and our clients can ask for more. Warranty differs from client to client (from 24 to 180 months). We also offer a variety of special insurance.



# Health & Safety Statements

It's ZMOP's policy - Manufacture & Erection s.r.o. to provide and maintain safe working conditions, equipment, and systems of work for all our employees, to provide valuable information, training, supervision, and consultation as they need this for specific purposes.

We accept our responsibility for the safety of all the people affected by our activities. Our operation is compliant with the two major standards that guide our working life - through our workplace by minimizing our adverse impacts, and through our continued well-being at work.

The allocation of responsibility for safety matters and the arrangements that the company will make to implement the policy are set within our Health and Safety Plan at Work. This policy is regularly reviewed to ensure that it continues to reflect both current and new legislation and our commitment to continual improvement, regarding its impact on the business and its working practices.

This is the policy of the company ZMOP - Manufacture & Erection s.r.o. We provide and maintain safe working conditions, equipment, and work systems for all our employees, and provide valuable information, training, supervision, and consultation as they need it for specific purposes.

The division of responsibilities for safety issues and the specific measures that the company will take to implement the policy are set in our Occupational Safety and Health Plan.

This policy is regularly reviewed to ensure that it continues to reflect current and new legislation and our commitment to continuous improvement in terms of its impact on business and its working practices.





# Environmental Policy

ZMOP – implement environmental protection as an integral part of standard operating procedures. The company is concerned not only with its direct impact on the environment but also with any indirect effects caused by the company's activities affecting its neighbours and the local community.



# Environmental Policy

Our environmental policy statement articulates the company's commitment to sound environmental management.

This policy shall be upheld through the following:

- Implementation and maintenance of an Environmental Management System in line with the International Standard BS EN ISO 14001.
- Maintaining effective environmental control procedures for all significant environmental aspects of the company's undertakings.
- Commitment to comply with all legal and regulatory requirements relevant to the company's activities.
- Commitment to prevent pollution and to avoid the use of hazardous materials on-site and in products wherever practicable.
- Settings of objectives and targets are regularly in line with our commitment to continual improvement of the Environmental Management System.





# Environmental Policy

This proactive stance shall be implemented throughout the company. All employees are expected to observe sound environmental practices and to support the company in its environmental objectives and targets. This policy is reviewed and revised as necessary to ensure its continuing effectiveness and suitability in line with changes to the Environmental Management System, legislation, and the achievement of objectives.

ZMOP - we introduce environmental protection as an integral part of standard operating procedures. The company deals not only with its direct effects on the environment but also with possible indirect effects of the company's activities that affect its neighbours and the local community.





# Environmental Policy

Our statement on environmental policy expresses the company's commitment to sound environmental management. This policy will be pursued through:

- Implementation and maintenance of the environmental management system in accordance with the international standard BS EN ISO 14001.
- Maintaining effective environmental control procedures for all significant environmental aspects of the company's enterprises.
- Commitment to comply with all legal and regulatory requirements related to the company's operations
- A commitment to prevent pollution and to avoid the use of hazardous materials on-site and in products whenever possible.
- Regular setting of goals and tasks in accordance with our commitment to constantly improve the environmental management system

This proactive attitude will apply throughout society. All employees are expected to follow good environmental practices and support the company in meeting its environmental goals.

This policy shall be reviewed and revised as necessary to ensure its continued effectiveness and appropriateness in line with changes in the environmental management system, legislation, and achievement of objectives.





# Declaration

This declaration of the fulfilment of quality conditions describes the established quality system in the company ZMOP - Manufacture & Erection s.r.o., which is created according to the requirements of the standard STN EN ISO 9001: 2001 and will be further developed and improved in accordance with the requirements of the company and customers. The document is primarily intended for the purposes of the company, copies can also be sold on request to business partners as confidential information.

The quality manual sold to the business partner serves only for information on quality assurance in the company ZMOP - Manufacture & Erection s. r. o. It is marked as "for information". ZMOP quality policy and goals - Manufacture & Erection s.r.o. are fully oriented to the requirements of this standard, but not limited to. The goal of the company is to satisfy the customer's requirements as much as possible through the services provided in all directions. This applies to all technical and aesthetic parameters, quantities, and terms as well as prices. We aspire not only to maintain the current position of the company amongst competing companies but to improve this position through continuous efforts to increase the production quality and services. To achieve these goals, the company's management decided to implement and maintain a quality assurance system that meets the requirements of the international standard STN EN ISO 9001: 2001.

At ZMOP we apply the principle "this concept is binding". The company's management fully agrees with the established concept of quality and management systems. The management makes every effort to successfully implement and further develop the system using all management tools. In the event of a dispute over quality assurance, the company's statutory representative will make a final decision.

Quality goals are developed by the company's management. It is inspected as part of the quality system review by the company's top management at least twice a year, depending on whether the quality objectives in progress are of a short-term or long-term nature. In accordance with the above, I, František Varecha, honestly declare on behalf of the company that the goods and services supplied by us will meet the standards in terms of customer requirements.

# Certificate

All work is done according to our MANUAL OF QUALITY IN PRODUCTION AND WELDING STN EN ISO 3834 - 2, STN EN 1090 - 2& Unified Building Code

**CERTIFICATE**

The Certification Body for  
Construction Products of TÜV Thüringen e.V.

certifies in accordance with TÜV Thüringen  
procedure that

**ZMOP – Manufacture & Erection s.r.o.**

Národná 1961  
SK- 900 02 Modra

has established and applies a quality system  
according to  
**DIN EN ISO 3834 – 2**  
Comprehensive quality requirements

in the specified scope to the annex of certificate

report no.: SK02/46892/21  
certificate no.: 0090 152 1076  
certificate expires: 2022-06-23



Valid only with hologram  
Erfurt, 30.07.2021



Technischer Überwachungsverein Thüringen e.V.  
Mühlendamm Straße 64, 99084 Erfurt, Telefon: 03 61 42 83-0, Fax: 03 61 42 83-242  
Notified Body Nr. 0090

**Certificate of conformity  
of the  
Factory Production Control (FPC)**  
0090-CPR-1090-1.0023.TÜVTH.2021.01

In compliance with Regulation 305/2011/EU of the European Parliament and of the Council of 08 March 2011  
(Construction Products Regulation – CPR)  
this certificate applies for following construction products:

**Product:** Structural Steel Components up to EXC 3 acc. to EN 1090-2  
**Intended use:** For structural use in all types of construction works  
**CE-marking method:** ZA 3.2, ZA 3.3, ZA 3.4, ZA 3.5 acc. to EN 1090-1:2012, Annex ZA  
**Production process:** design, cutting, punching, forming, welding, mechanical connections, mounting and corrosion protection  
**Manufacturer:** ZMOP – Manufacture & Erection s.r.o.  
(Manufacturer or its authorized representative) Národná 1961  
SK- 900 02 Modra  
**Manufacturing plant(s):** Národná 1961  
(Production site of the manufacturer) SK- 900 02 Modra  
**Confirmation:** This certificate attests that all provisions concerning the assessment and verification of constancy of performance described in Annex ZA of the standard  
**EN 1090-1:2012**  
under system 2, are applied and the factory production control fulfils all the prescribed requirements set out above

**Begin of validity:** 24.06.2019  
(Date of final assessment)  
**Next surveillance date:** 23.06.2023  
**Period of validity:** This certificate will remain valid as long as the test methods and/or factory production control requirements included in the harmonised standard, used to assess the performance of the declared characteristics, do not change, and the product and the manufacturing conditions in the plant are not modified significantly.

**Remarks:** To this certificate belong the welding certificate(s):  
1090-2.0023.TÜVTH.2021.01  
and see back

**Place / Issue date:** Erfurt / 30.07.2021



Valid only with hologram

DAKKS

EC\_Certificate\_CPR\_EN\_1090-1\_0023\_TUV\_TH\_01

Rev. 12/19



Technischer Überwachungsverein Thüringen e.V.  
Mühlendamm Straße 64, 99084 Erfurt, Telefon: 03 61 42 83-0, Fax: 03 61 42 83-242

**Welding Certificate**  
1090-2.0023.TÜVTH.2021.01

In compliance with EN 1090-1, Tab. B.1, the following has been stated:  
This welding certificate is valid in connection with the EC-Certificate No.  
0090-CPR-1090-1.0023.TÜVTH.2021.01 in the field of CPR

**Manufacturer:** ZMOP – Manufacture & Erection s.r.o.  
(Manufacturer or its authorized representative) Národná 1961  
SK- 900 02 Modra  
**Essential manufacturing facility(ies):** Národná 1961  
(Production site of the manufacturer) SK- 900 02 Modra  
**Technical specification:** EN 1090-2:2018  
**Execution class:** EXC 3  
**Welding Process(es):** 111 – Shielded Metal Arc Welding (SMAW) 121 – Submerged Arc Welding (SAW) 135 – Gas Shielded Metal Arc Welding (GMAW/MIG)  
(Reference no. Acyclic DIN EN ISO 4180) M-Group 1.1, 1.2 acc. to CEN ISO/TR 15008 and DIN EN 1090-2, table 2 and 3.  
**Parent Material(s):** (Grade/Standard)  
**Responsible Welding Coordinator:** Eng. Dusan Hurka, 1986  
(Title, first name, Name, Qualification)  
**Deputy:** Mr. Anton Šimka, 1970  
(Title, first name, Name, Qualification)  
**Confirmation:** All provisions concerning welding as described in the above mentioned technical specification(s) were applied.  
**Begin of validity:** 24.06.2019  
(First issue date)  
**Next surveillance date:** 23.06.2023  
**Period of validity:** This certificate remains valid as long as the conditions of the above mentioned technical specifications in reference to the manufacturing conditions in the factory are not modified significantly.

**Remarks:** see back  
**Place / Issue date:** Erfurt / 30.07.2021



Valid only with hologram



Welding\_Certificate\_CPR\_EN\_1090-2\_210023\_TUV\_TH\_01

Rev. 12/19





Approved  
Ready for shipping



Pre-Shipment  
Inspection



# INCINERATION PLANT

## Location

FRANCE  
Montereau-Fault-Yonne

## Work

Delivery and erection of  
steel structure, ducting





# INCINERATION PLANT

## Location

FRANCE

Limoges

## Work

Design, delivery, and  
erection of steel structure,  
ducting





# INCINERATION PLANT

## Location

FRANCE

Toulon

## Work

Design, delivery and erection  
of steel structure, ducting





# CONTACT US

---

## OFFICE

[zmop@zmop.sk](mailto:zmop@zmop.sk)

+421 33 640 23 67

## MANAGEMENT

[koci@zmop.sk](mailto:koci@zmop.sk)

+421 903 727 827